

Black Family Development Inc.
Agency Org Chart
Updated 1/15/2016 JF

**Executive Management,
Management & Administration**

Consumers

Board of Directors
Chairperson – Vice Chairperson
Treasurer - Secretary

Board Committees
 Finance/Audit - Program - Personnel

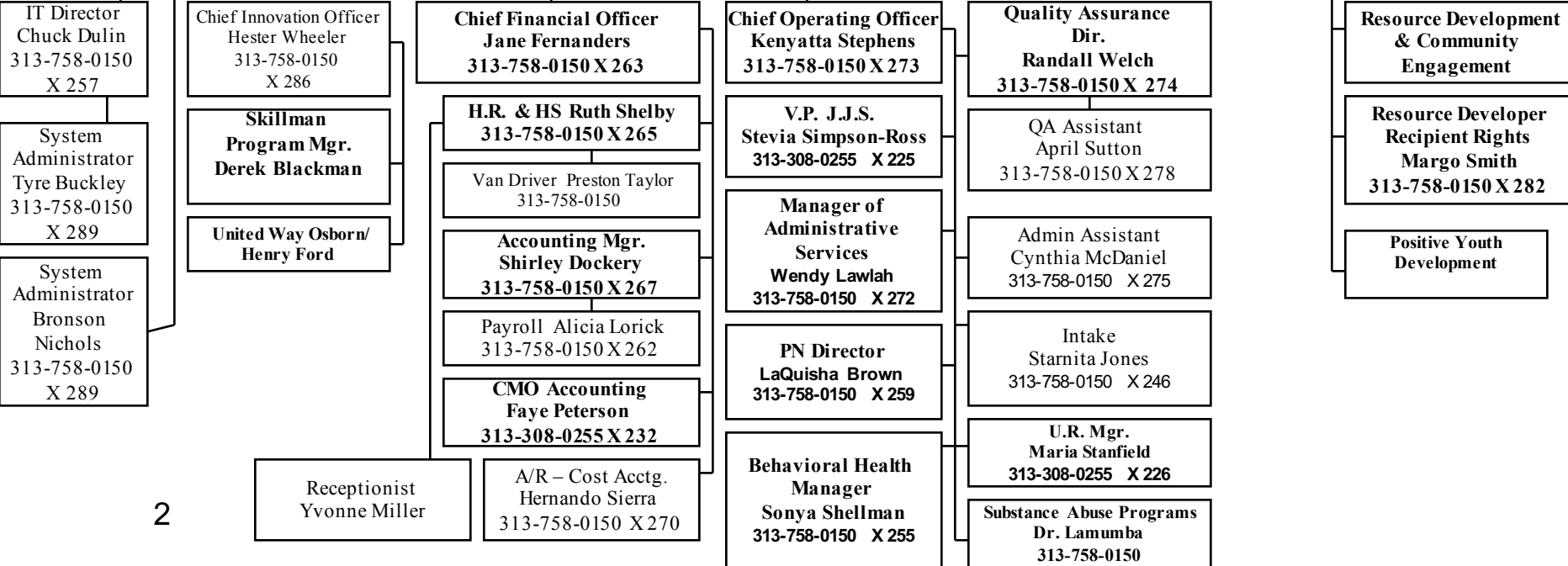
Chief Executive Officer
Alice G. Thompson 313-758-0150 X 280

Promise Neighborhoods

BFDI BES

**Corporate Compliance /
Executive Assistant**
Tanya Traylor
 313-758-0150 X 281

Administrative Assistant
 Lori Thurman
 313-758-0150 X 283



Community Engagement, United Way In School Positive Youth Development, Community Based, and Family Preservation Services Org Chart
313-758-0150 Main Office

Consumers

Board of Directors
Chairperson – Vice Chairperson
Treasurer - Secretary

Board Committees
Finance/Audit - Program - Personnel

Chief Executive Officer
Alice G. Thompson 313-758-0150 X 280

Corporate Compliance /
Executive Assistant
Tanya Traylor
313-758-0150 X 281

Positive Youth Development

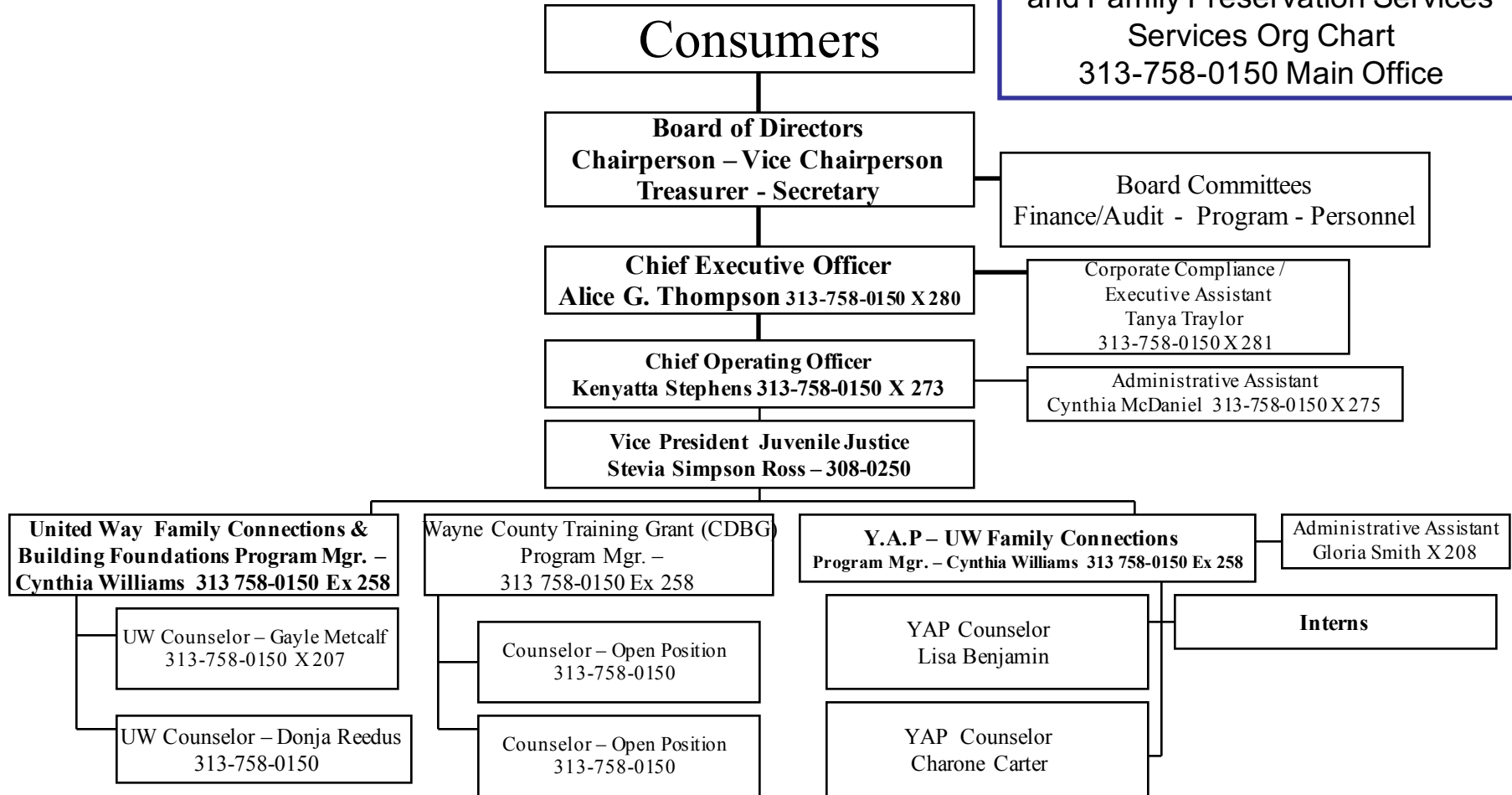
UW Osborn Prep
Links to Literacy

UW Henry Ford
Community Engagement
Xenobia Awada

Hope Academy
Community Engagement
Keisha Allen

UW Osborn Prep Links to Literacy
PTE Facilitator–Xenobia Awada

YAP, CDBG. United Way & TANF
 In School, Positive Youth
 Development, Community Based,
 and Family Preservation Services
 Org Chart
 313-758-0150 Main Office



CMO Services 313-308-0255
5555 Conner

Consumers

Board of Directors
Chairperson – Vice Chairperson
Treasurer - Secretary

Board Committees
Finance/Audit - Program - Personnel

Chief Executive Officer
Alice G. Thompson 313-758-0150 X 280

Corporate Compliance /
Executive Assistant
Tanya Traylor
313-758-0150 X 281

Administrative Services

Financial Management

Quality Assurance

Information Technology

Human Resources

Resource Development

Recipient Rights

Contract Management

UR Manager Maria Stanfield
313-308-0255 X 226

Administrative Assistant
Sharon Hughes 313-308-0255

Prevention Specialist
Margaret Greenidge-Amstead
313-308-0255

Chief Operating Officer
Kenyatta Stephens 313-758-0150 X 273

Administrative Assistant
Cynthia McDaniel 313-758-0150 X 275

Claims
Adjudication
Behavioral
Health

Juvenile Justice Services
V.P. Stevia Simpson-Ross
313-308-0255 X 225

Administrative Assistant
Gina Foster 313-308-0255

Supervisor
Terrence Murray
313-308-0255

Case Mgr. Karen Streeter
313-308-0255 X275

Case Mgr. James Williams
313-308-0255

Supervisor
Tamiko Logan
313-308-0255

Case Mgr. Tonia O'Neil
313-308-0255 X 259

Case Mgr. Ebony Williams
313-308-0255

Supervisor Rudy Moss
313-308-0255 X 246

Program Mgr
Samantha Perry-Guinn
313-758-0150 X 254
Admin Assistant Theresa Kendricks
313-758-0150 X 240

Counselor Tonya Wilson
313-758-0150 X 247

Counselor Keisha Render
313-758-0150 X 218

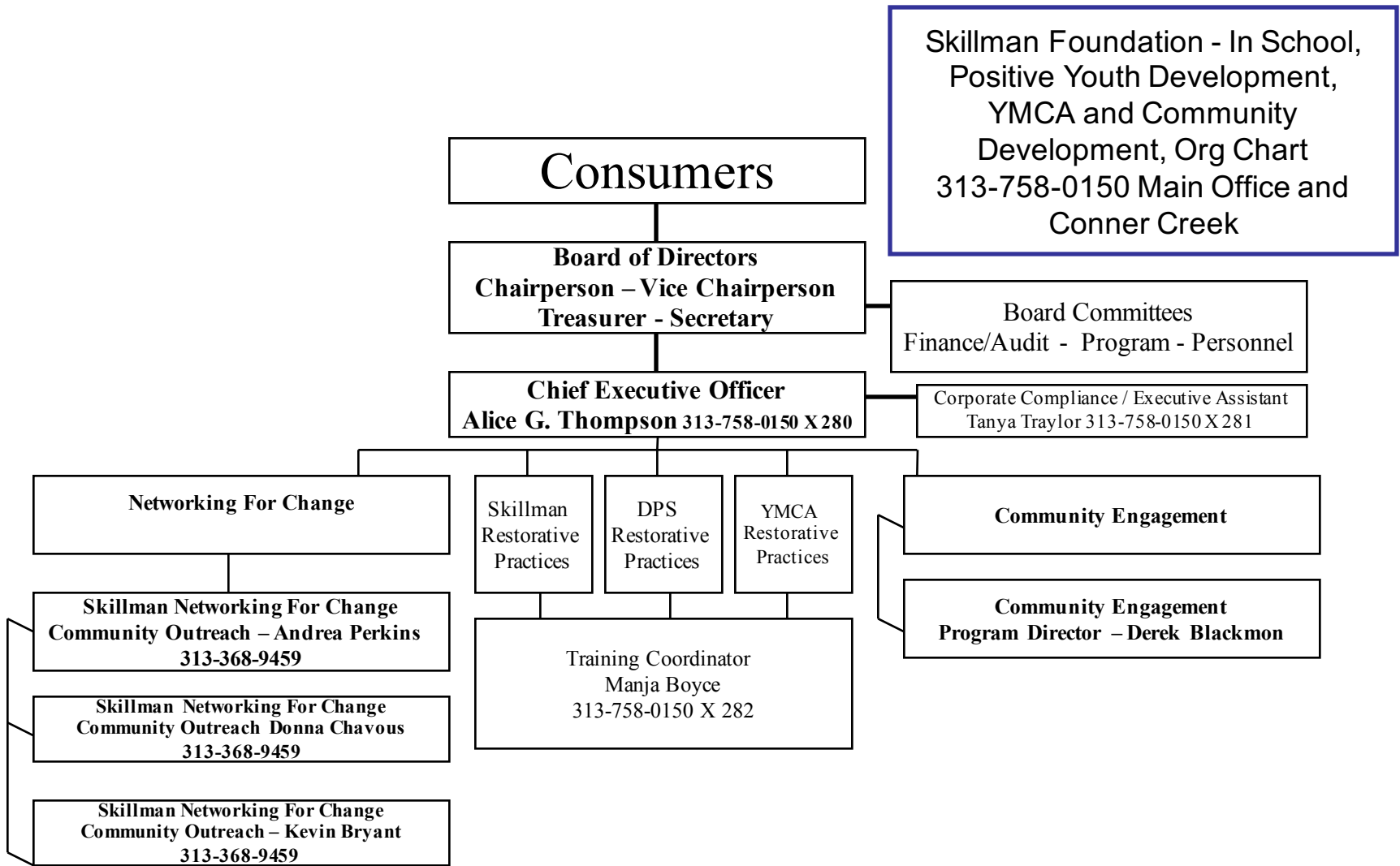
Counselor Brittney Calloway
313-758-0150

MIS Administrator
Rashida Johnson
313-308-0255
X 223

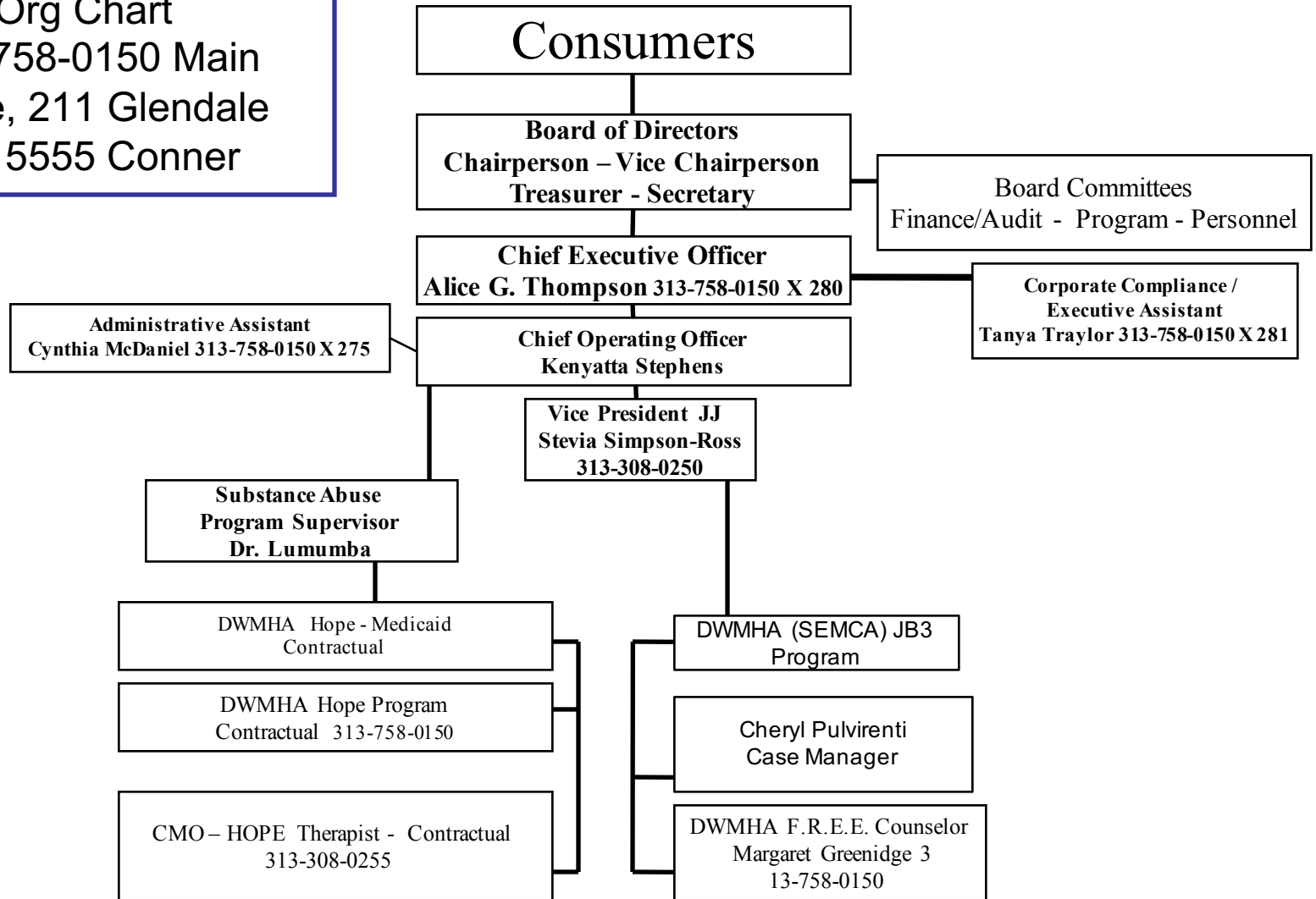
Data Entry Marian Jones
313-308-0255 X 234

Data Entry Latesha Newsom
313-308-0255 X 243

SOC Youth Advocates:
313-758-0150



Substance Abuse & Prevention Services
 Org Chart
 313-758-0150 Main Office, 211 Glendale and 5555 Conner



**Behavioral Health
Org Chart
313-758-0150
Main Office**

Consumers

Board of Directors
Chairperson – Vice Chairperson
Treasurer - Secretary

Board Committees
Finance/Audit - Program - Personnel

Chief Executive Officer
Alice G. Thompson – 313-758-0150 X 280

Corporate Compliance /
Executive Assistant
Tanya Traylor – 313-758-0150 X 281

Chief Operating Officer
Kenyatta Stephens 313-758-0150 X 273

Administrative Assistant
Cynthia McDaniel 313-758-0150 X 275

Vice President Juvenile Justice
Stevia Simpson Ross 313-308-0255 X225

Administrative Assistant
Sharon Hughes

Clinical Director
Open Position 313-758-0150

Program Manager ISP, *Wraparound*, SOC
Samantha Perry 313-758-0150 X 254

Administrative Assistant
Vivian Porter 313-308-0255

**Program Manager *STAGES - CMH Carelink*
& CMO IFS**
Sonya Shelman

Community Team
Community Stakeholders

Youth Advocates
5 PTE's

Child & Family Team
Natural & Formal Supports

Psychiatrist
Locumtenens

Case Manager
Elise Goulbourne

Case Manager
Paula Armstrong

PMTO
Supervisor
Khalea Foy

Facilitator
Christina Williams
313-758-0150

Claims Adjudicator
Andrea Tippins

Counselor
Anquinette. Mosley
313-308-0255

Therapist
Sharon McFolley
313-308-0255

Therapist
Marquetta Turner

Facilitator
Kristia Spight
313-758-0150

Claims Adjudication
MIS Department

**Contractual
Staff**

Therapist
Satira Collier

Detroit's Promise Neighborhoods Organization Chart – Funded By Kellogg, BFDI

