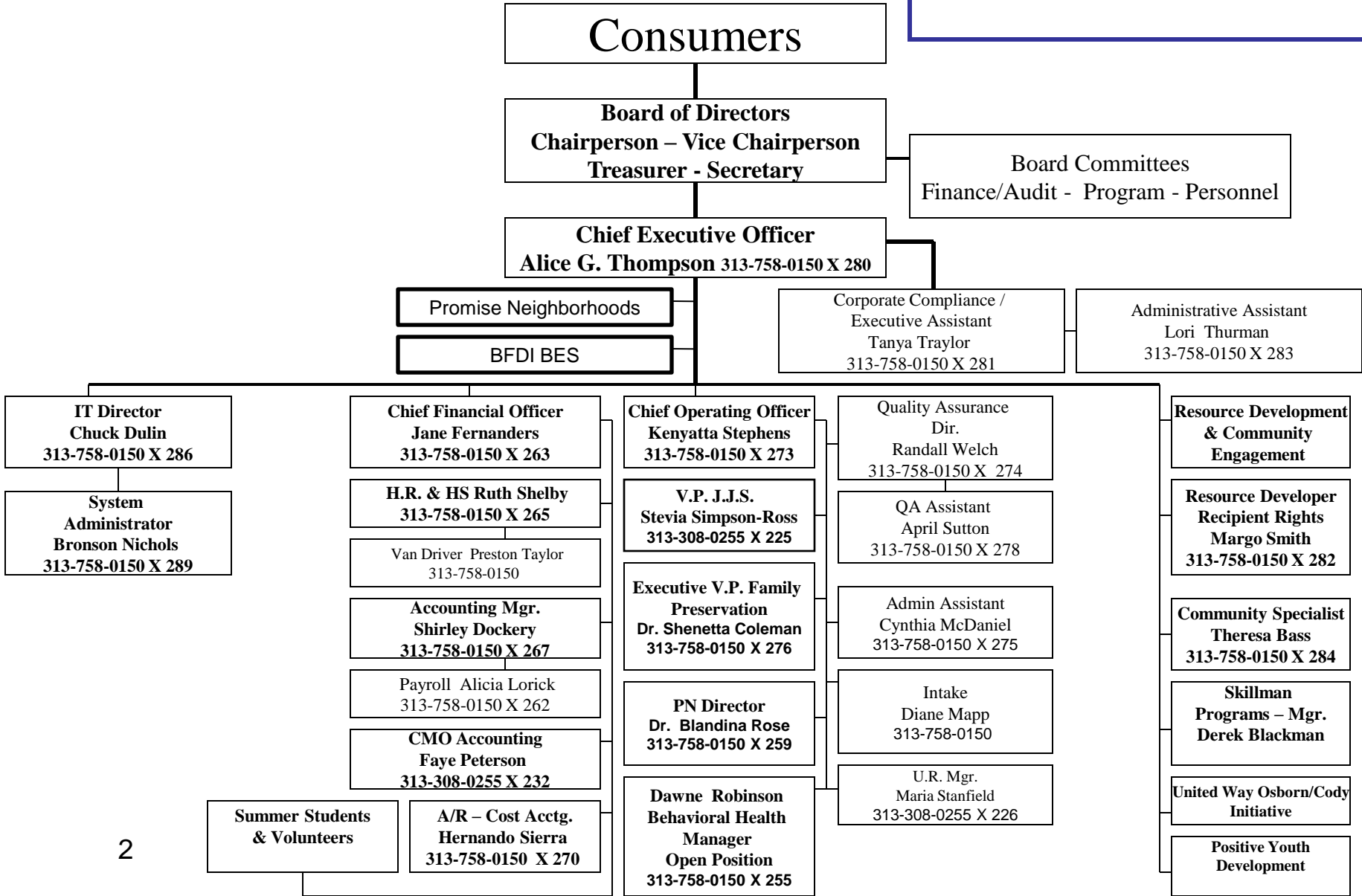
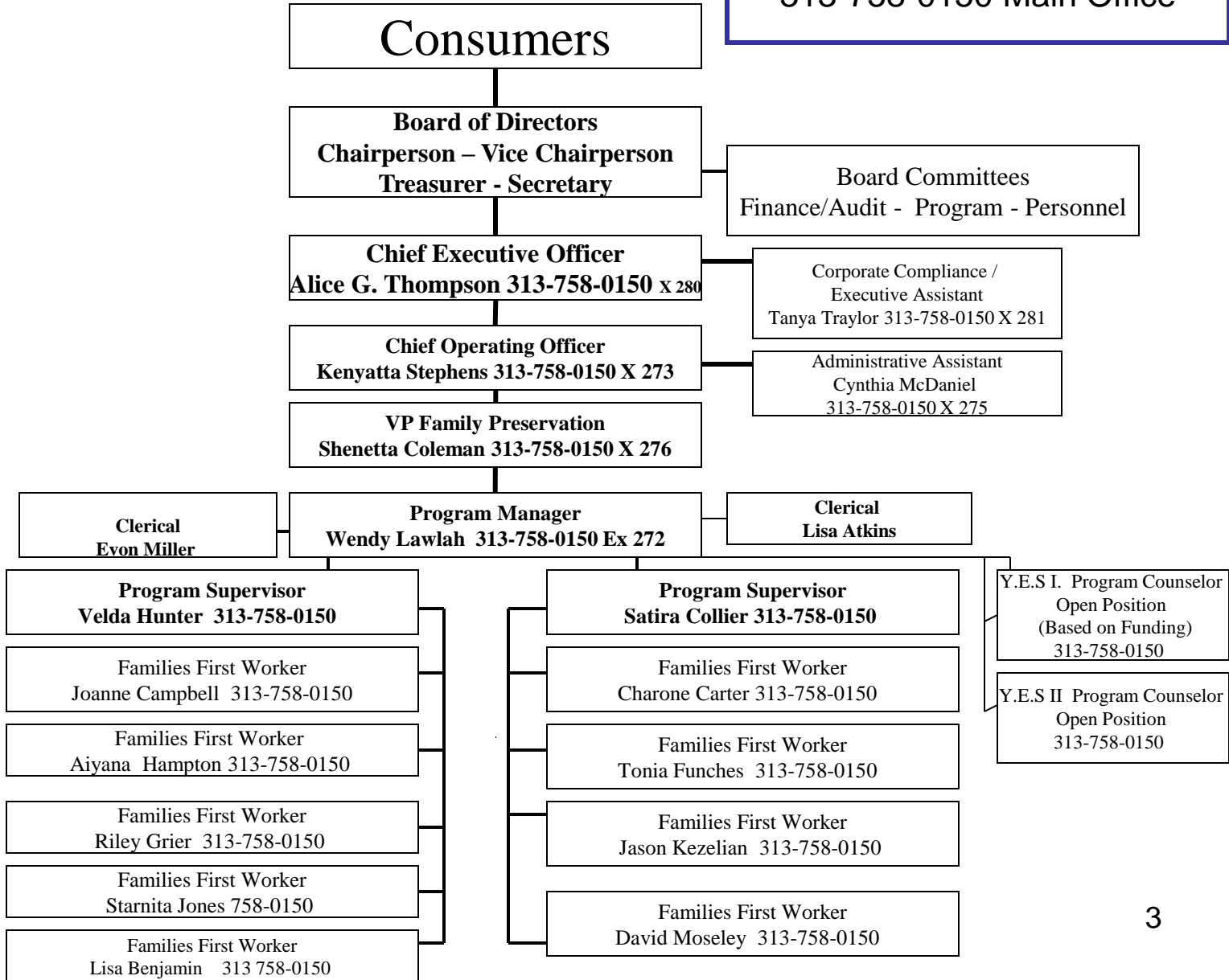


**Black Family Development Inc.**  
**Agency Org Chart**  
*Updated 04/21/2014 JF*

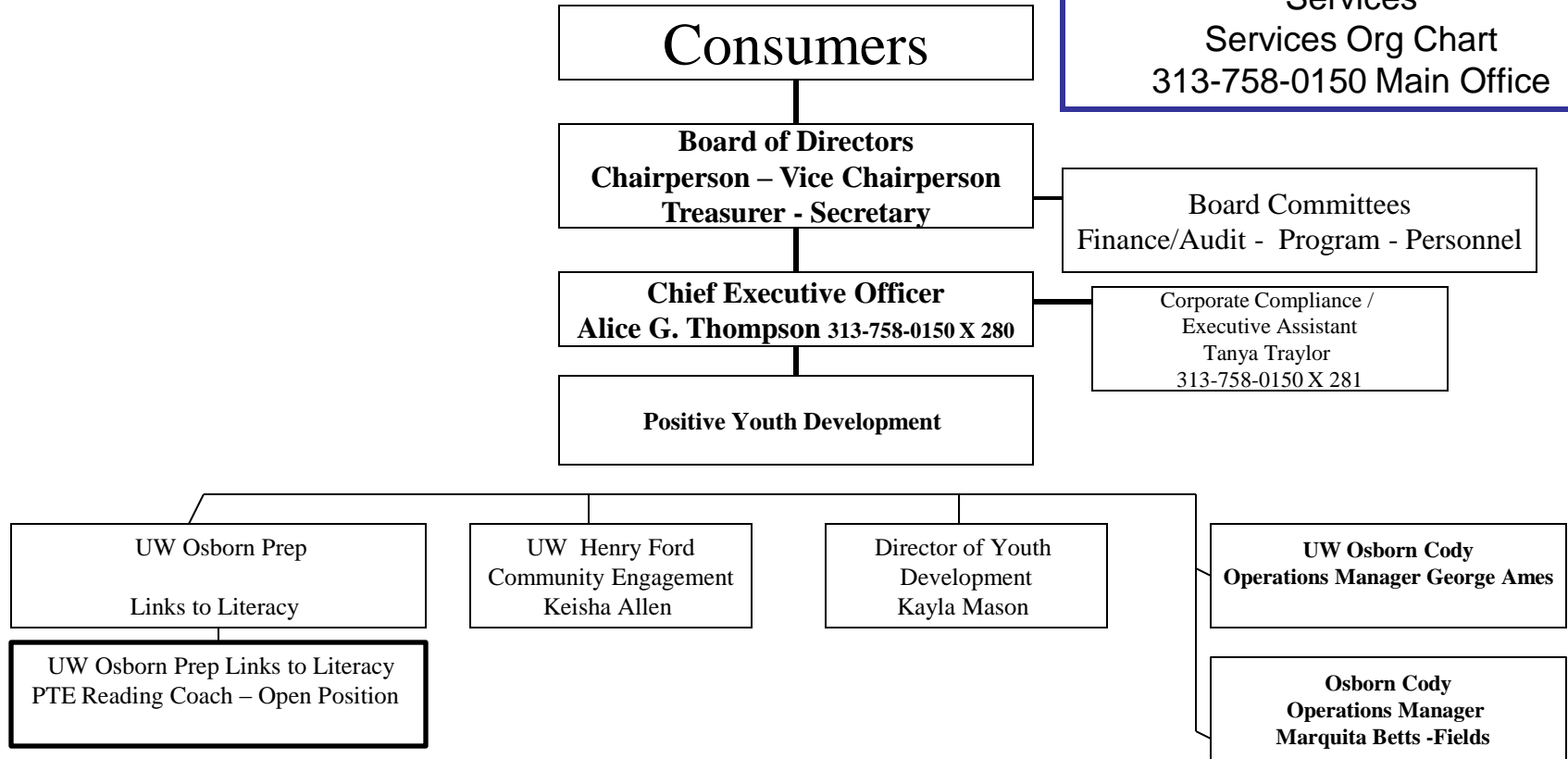
**Executive Management,  
Management & Administration**



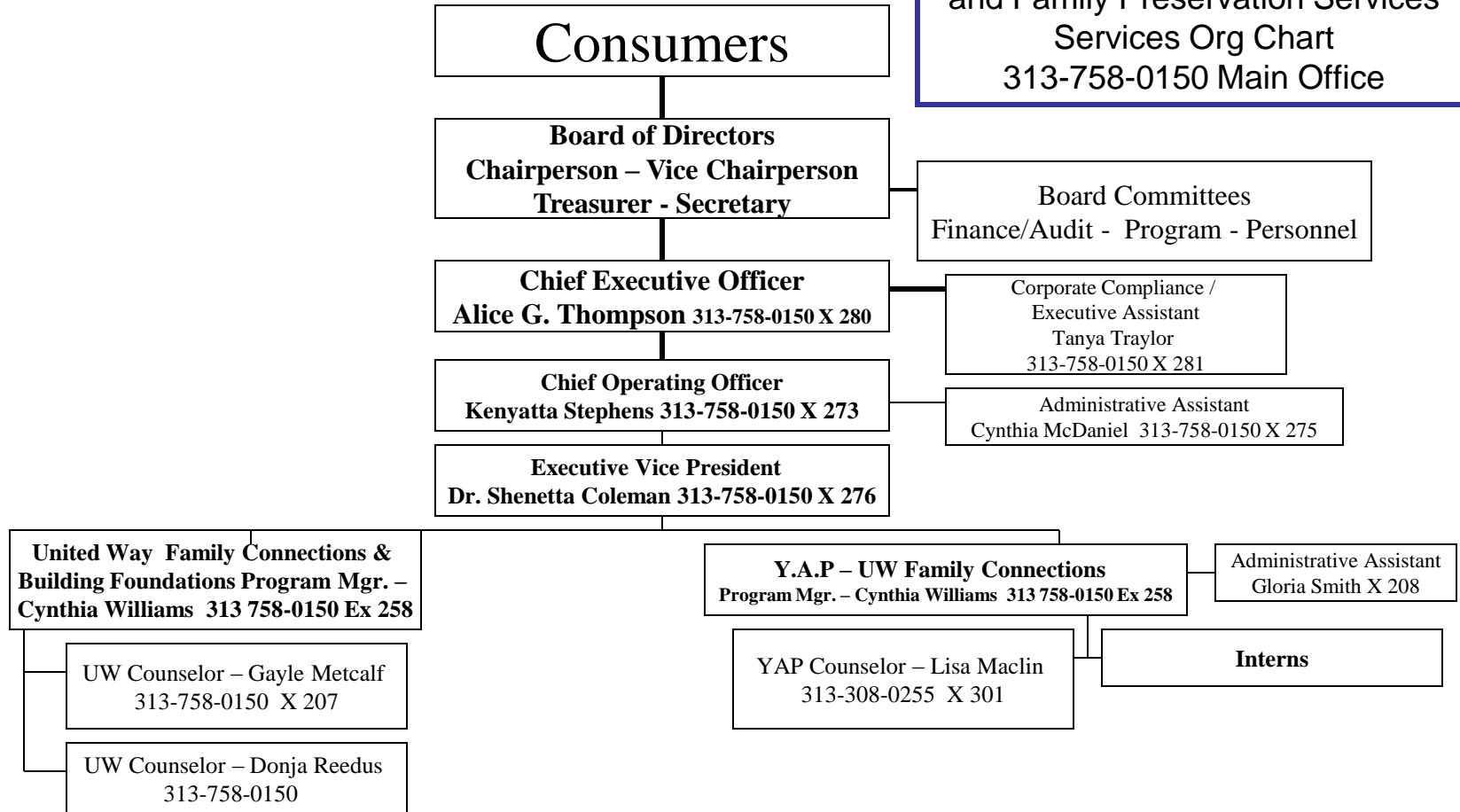
**Families First & Y.E.S.  
Services Org Chart  
313-758-0150 Main Office**



United Way In School Positive Youth Development, Community Based, and Family Preservation Services  
 Services Org Chart  
 313-758-0150 Main Office



**YAP, United Way & TANF  
In School, Positive Youth  
Development, Community Based,  
and Family Preservation Services  
Org Chart  
313-758-0150 Main Office**



**CMO Services 313-308-0255  
5555 Conner**

**Consumers**

**Board of Directors**  
Chairperson – Vice Chairperson  
Treasurer - Secretary

**Board Committees**  
Finance/Audit - Program - Personnel

**Chief Executive Officer**  
**Alice G. Thompson 313-758-0150 X 280**

Corporate Compliance /  
Executive Assistant  
Tanya Traylor  
313-758-0150 X 281

**Administrative Services**

**Financial Management**

**Quality Assurance**

**Information Technology**

**Human Resources**

**Resource Development**

**Recipient Rights**

**Contract Management**

UR Manager Maria Stanfield  
313-308-0255 X 226

Administrative Assistant  
Sharon Hughes 313-308-0255

**Chief Operating Officer**  
**Kenyatta Stephens 313-758-0150 X 273**

Administrative Assistant  
Cynthia McDaniel 313-758-0150 X 275

**Juvenile Justice Services**  
**V.P. Stevia Simpson-Ross  
313-308-0255 X 225**

Administrative Assistant  
Gina Foster 313-308-0255

**Supervisor**  
**Tamiko Logan  
313-308-0255 X 227**

Case Mgr. Bridgette Morris  
313-308-0255 X 259

Case Mgr. Karen Streeter  
313-308-0255 X275

Case Mgr. James Williams  
313-308-0255

**Supervisor**  
**Terrence Murray  
313-308-0255**

Case Mgr. Kim Carter-Hunt  
313-308-0255 X 268

Case Mgr. Yolanda Steele  
313-308-0255 X 272

Case Mgr. Ebony Williams  
313-308-0255

**Supervisor Rudy Moss  
313-308-0255 X 246**

**Program Mgr**  
**Samantha Perry-Guinn  
313-758-0150 X 254**  
Admin Assistant Theresa Kendricks  
313-758-0150 X 240

Counselor Tonya Wilson  
313-758-0150 X 247

Counselor Keisha Render  
313-758-0150 X 218

Counselor Brittney Calloway  
313-758-0150

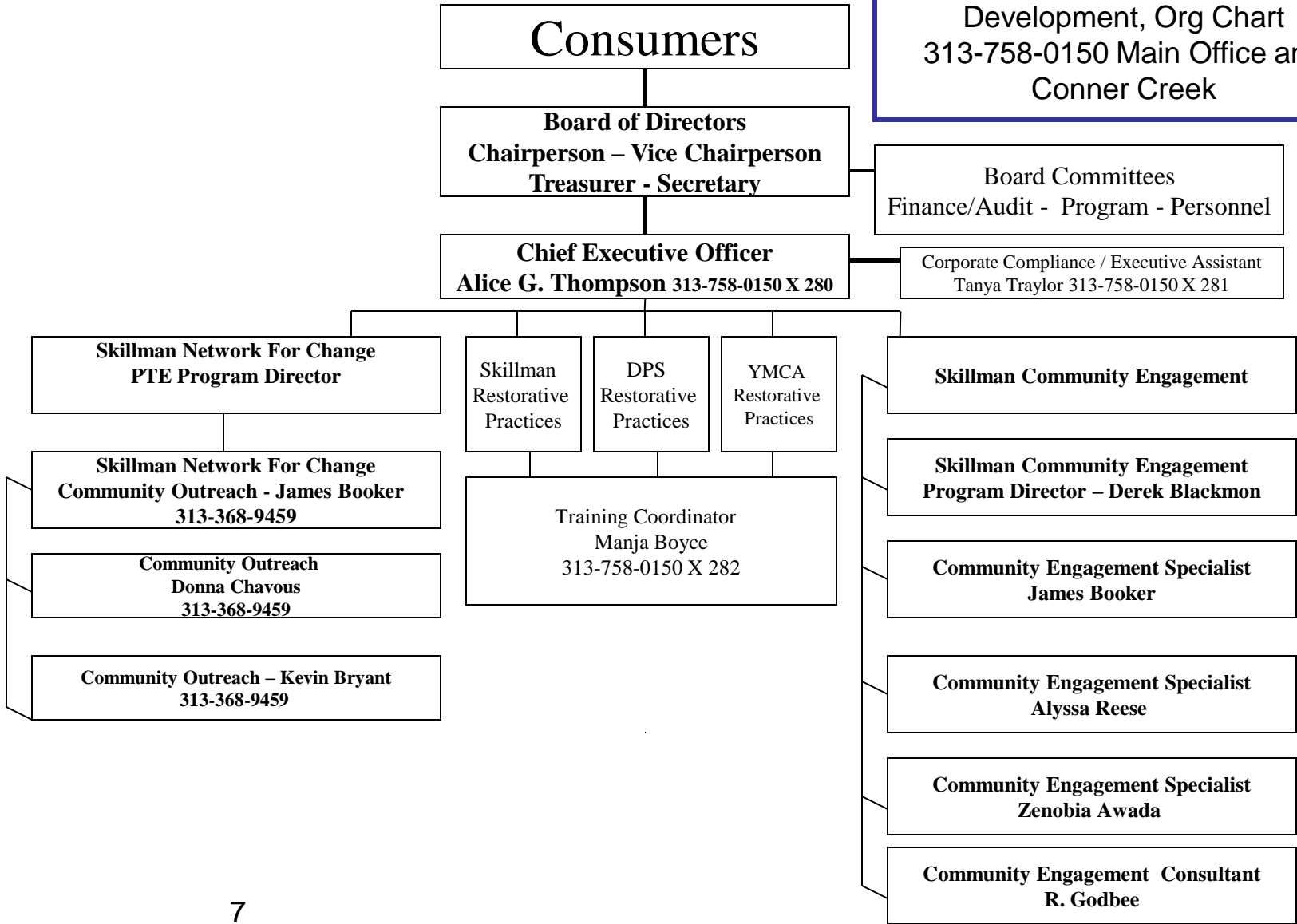
**MIS Administrator**  
**Rashida Johnson  
313-308-0255  
X 223**

Data Entry Marian Jones  
313-308-0255 X 234

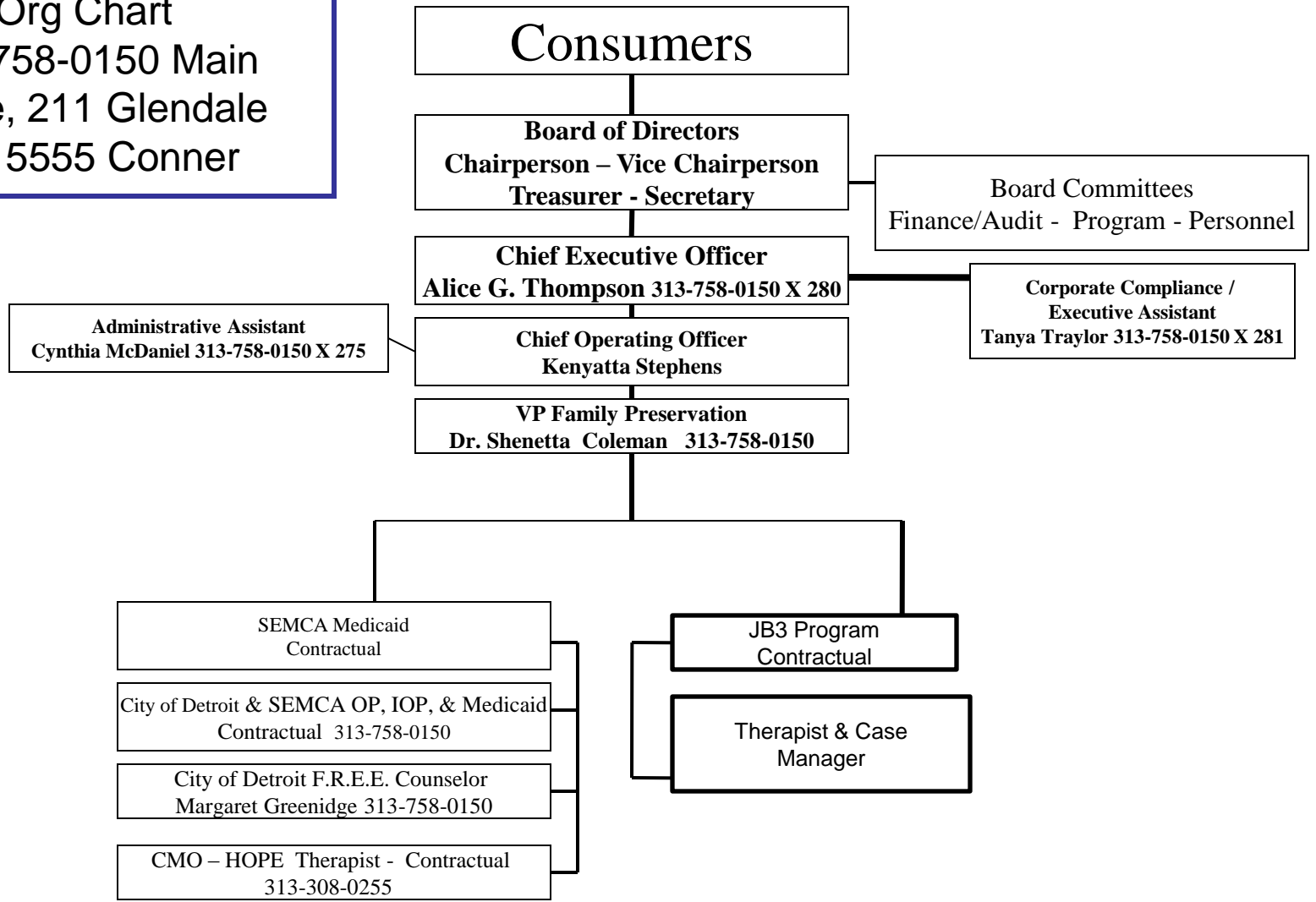
Data Entry Latesha Newsom  
313-308-0255 X 243

**SOC Youth Advocates:**  
Janea' Jones  
Diamond Dale  
Quavona Watkins  
313-758-0150

Skillman Foundation - In School,  
Positive Youth Development,  
YMCA and Community  
Development, Org Chart  
313-758-0150 Main Office and  
Conner Creek

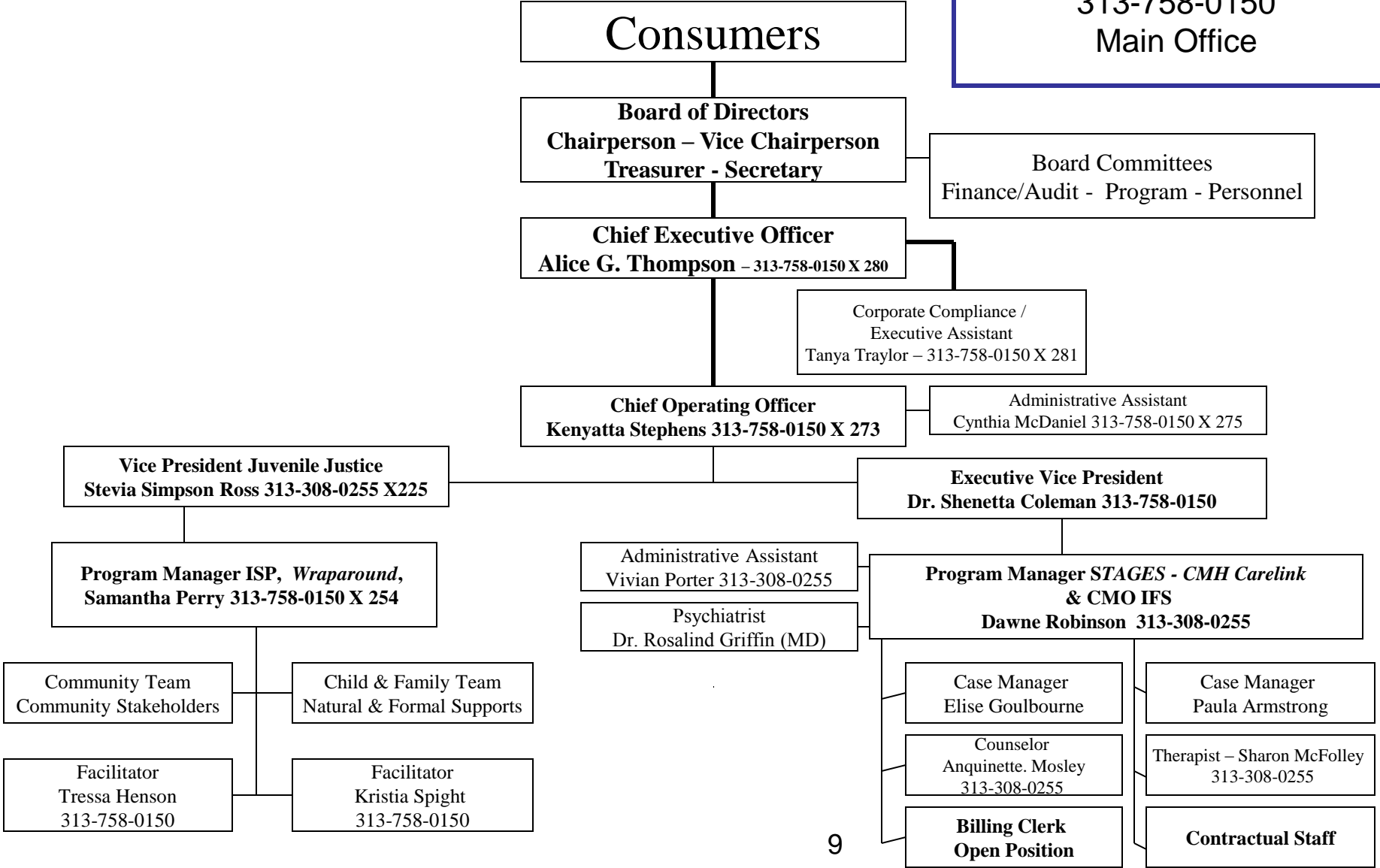


Substance Abuse & Prevention Services  
 Org Chart  
 313-758-0150 Main Office, 211 Glendale and 5555 Conner





**Behavioral Health  
Org Chart  
313-758-0150  
Main Office**



# Detroit's Promise Neighborhoods Organization Chart – Funded By Kellogg, BFDI

