

Consumers

Board Officers:
President Vice-President Treasurer Secretary

Board Committees
Finance/Audit - Program - Personnel

Chief Executive Officer
Kenyatta Stephens 313-758-0150 X 280

Planning and Development - **Certified Community Behavioral Health Clinic**

Corporate Compliance Officer/ Chief Administrative Officer
Tanya Traylor 313-758-0150 X 281

Management Information Technician Tayler Thompson x282

Chief Operating Officer
Dr. LaTonya Shelton 313-758-0150 X 273

Chief Financial Officer
Jane Fernanders 313-758-0150 X 263

Family Preservation/Juvenile Justice Services
313-308-0255

In School Services

Prevention Services

Community Based Services

Substance Abuse

Behavioral Health Services

Clinical Director

Early Childhood

Fiduciary Services

Fiscal Management

Risk Management

HR & HS Management

IT & Facility Management Chuck Dulin
313-758-0150 X 257

Community Engagement

BFDI Training Institute

Vice President of Performance Improvement
Kimberly O'Neal

Positive Youth Development

Recipient Rights (Customer Service Representative)
Manja Boyce – Dr. La Tonya Shelton 313-758-0150 X282

Black Family Development Inc.
Agency Org Chart
Updated 7/7/2022 JF

Org Chart Summary

Consumers

Board of Directors
Chairperson – Vice Chairperson
Treasurer - Secretary

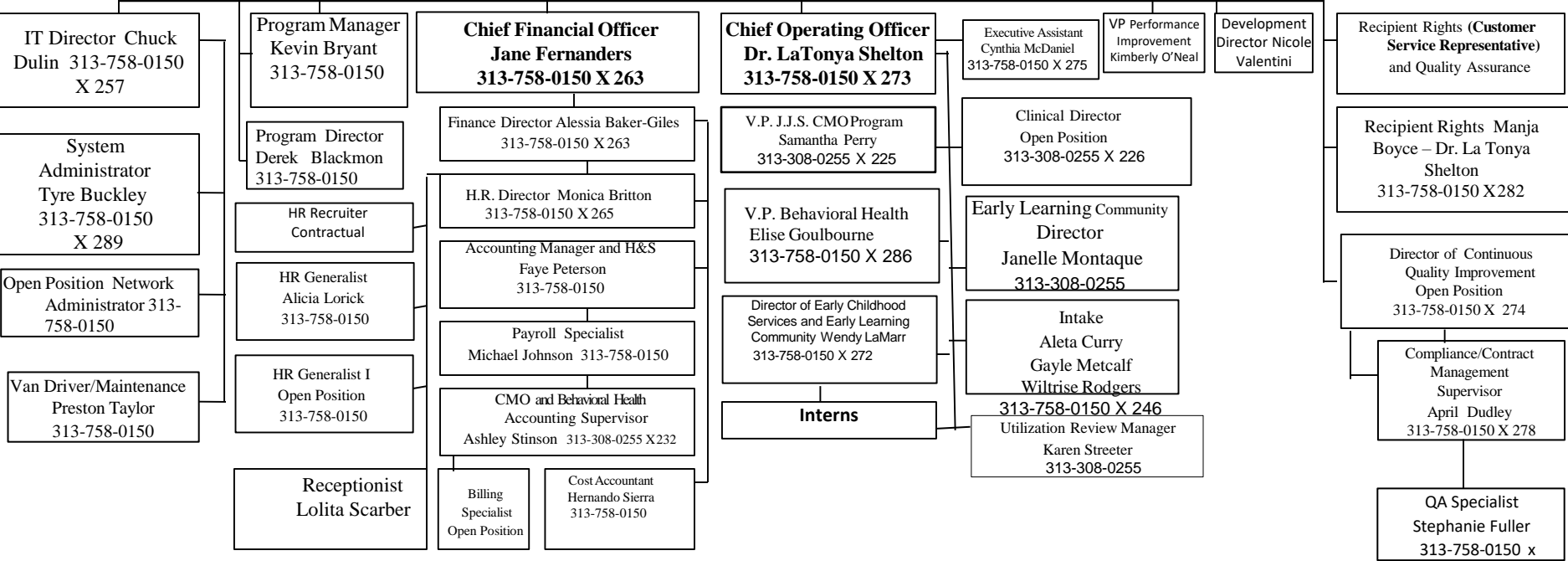
Board Committees
 Finance/Audit - Program - Personnel

Chief Executive Officer
Kenyatta Stephens 313-758-0150 X 280

Promise Neighborhoods
 Community Relations Admin Support
 Keshia McKinney

Corporate Compliance / Chief Administrative Officer Tanya Traylor
313-758-0150 X 281

Management Information Technician
Taylor Thompson
313-758-0150 X 283



**Family Preservation
Juvenile Justice - Care
Management Organization
Services 313-308-0255
5555 Conner**

Consumers

**Board of Directors
Chairperson – Vice Chairperson
Treasurer - Secretary**

**Board Committees
Finance/Audit - Program - Personnel**

**Chief Executive Officer
Kenyatta Stephens 313-758-0150 X 280**

**Corporate Compliance /
Chief Administrative Officer
Tanya Traylor
313-758-0150 X 281**

**Recipient Rights (Customer Service
Representative) Manja Boyce – Dr. La Tonya Shelton
313-758-0150**

**Administrative
Services**

**Financial
Management**

**Quality
Assurance**

**Information
Technology**

**Human
Resources**

**Resource
Development**

**Recipient
Rights**

**Contract
Management**

**Clinical Director
Open Position 313-308-0255**

**Administrative Assistant
Sharon Hughes 313-308-0255**

**Chief Operating Officer
Dr. LaTonya Shelton 313-758-0150 X 273**

**Executive Assistant Cynthia
McDaniel 313-758-0150 X 275**

**Claims
Adjudication
Behavioral
Health**

**Juvenile Justice Services
V.P. Samantha Perry
313-308-0255 X 225**

**Supervisor TerrenceMurray
313-308-0255**

**Case Mgr. Tonia O'Neil
313-308-0255 X 259**

**Case Mgr. Tonya Wilson
313-308-0255**

**Case Mgr. Open Position
313-308-0255 X 275**

Interns

**ISP Services
Supervisor Tamiko Logan
313-308-0255**

**Counselor Keisha Render
313-308-0255**

**Case Mgr. Robert Young Jr.
313-308-0255**

SOC Youth Advocates:

**Cameron Downer-Reynolds
Taya Johnson
Open Position**

**MIS Administrator
Rashida Johnson
313-308-0255 X 223**

Prevention - Behavioral Health
Org Chart
313-758-0150
Main Office & 5555 Conner

Consumers

Board of Directors
Chairperson – Vice Chairperson
Treasurer - Secretary

Board Committees
 Finance/Audit - Program - Personnel

Chief Executive Officer
Kenyatta Stephens – 313-758-0150 X280

Recipient Rights
(Customer Service Representative)
Manja Boyce – Dr. La Tonya Shelton
313-758-0150

Corporate Compliance /
/ Chief Administrative Officer
Tanya Traylor – 313-758-0150 X 281

Chief Operating Officer
Dr. LaTonya Shelton 313-758-0150 X273

Executive Assistant
Cynthia McDaniel 313-758-0150 X 275

Vice President Behavioral Health
Elise Goulbourne 313-758-0150 x 286

Psychiatrists:
Dr. Lisa Fuller
Dr. Rosalind Spells

Behavioral Health Director *STAGES – DWIHN*
SUD WASHTENAW

Wraparound – PMTO
Supervisor Khalea Foy

Administrative Assistant
 Lisa Atkins

Community Team
 Community Stakeholders

Child & Family
 Team Natural & Formal
 Supports

Wraparound Facilitator
 Donisha Alexander

Wraparound Facilitator
 Terena Rice

Parent and Student
 Support Counselor
 Zenobia Awada

Therapist
 Satira Collier

Therapist
 Willie McCullough

Parent Support
 Partner Robert
 Petaway Jr.

School Based Services – School Success and MH Medicaid School Based

Supervisor
 Se'ara Davis

Prevention Counselor
 Yasmine Bates

Prevention Counselor
 Velda Hunter

Prevention Counselor
 Tiffany Blandford

Prevention Counselor
 Juana Scandrick

Admin Assistant
 Marion Jones

Admin Assistant
 Gloria Smith

Interns

Supervisor Open
 Marquetta Turner

Prevention Counselor
 Juana Scandrick

Prevention Counselor
 Catrina Tookes

Prevention Counselor
 Mercedes Gough

Prevention Counselor
 Manja Boyce

Interns

Claims Adjudicator
 Open Position

Therapist
 Anquinette Mosley
 313-308-0255

**Contractual
 Staff**

Clinician
 Tracy Tayler

Interns

Sonya Shelman

Administrative Assistant
 Vivian Porter 313-308-0255

Case Manager
 Paula Armstrong
 313-308-0255

Clinical Care
 Coordinator
 Morgan Armstrong

Therapist
 Danayzha Williams

Clinician
 Tylia Green

Prevention
 YAP, United Way, Positive Youth
 Development, Family Preservation
 and Building Foundations
 13-758-0150 Main Office

Consumers

Board of Directors
 Chairperson – Vice Chairperson
 Treasurer - Secretary

Board Committees
 Finance/Audit - Program - Personnel

**Recipient Rights (Customer
 Service Representative)**
 Manja Boyce – Dr, La Tonya Shelton
 313-758-0150 X 282

Chief Executive Officer
 Kenyatta Stephens 313-758-0150 X 280

**Corporate Compliance /
 Chief Administrative Officer**
 Tanya Traylor
 313-758-0150 X 281

Chief Operating Officer
 Dr. LaTonya Shelton 313-758-0150 X273

Executive Assistant
 Cynthia McDaniel 313-758-0150 X 275

Vice President Juvenile Justice
 Samantha Perry – 308-0250

United Way
 Family Connections &
 Building Foundations
 Program Mgr. –
 Cynthia Williams
 313 758-0150 Ex 258

Y.A.P –
 UW Family Connections
 Program Mgr.
 Cynthia Williams
 313 758-0150 Ex 258

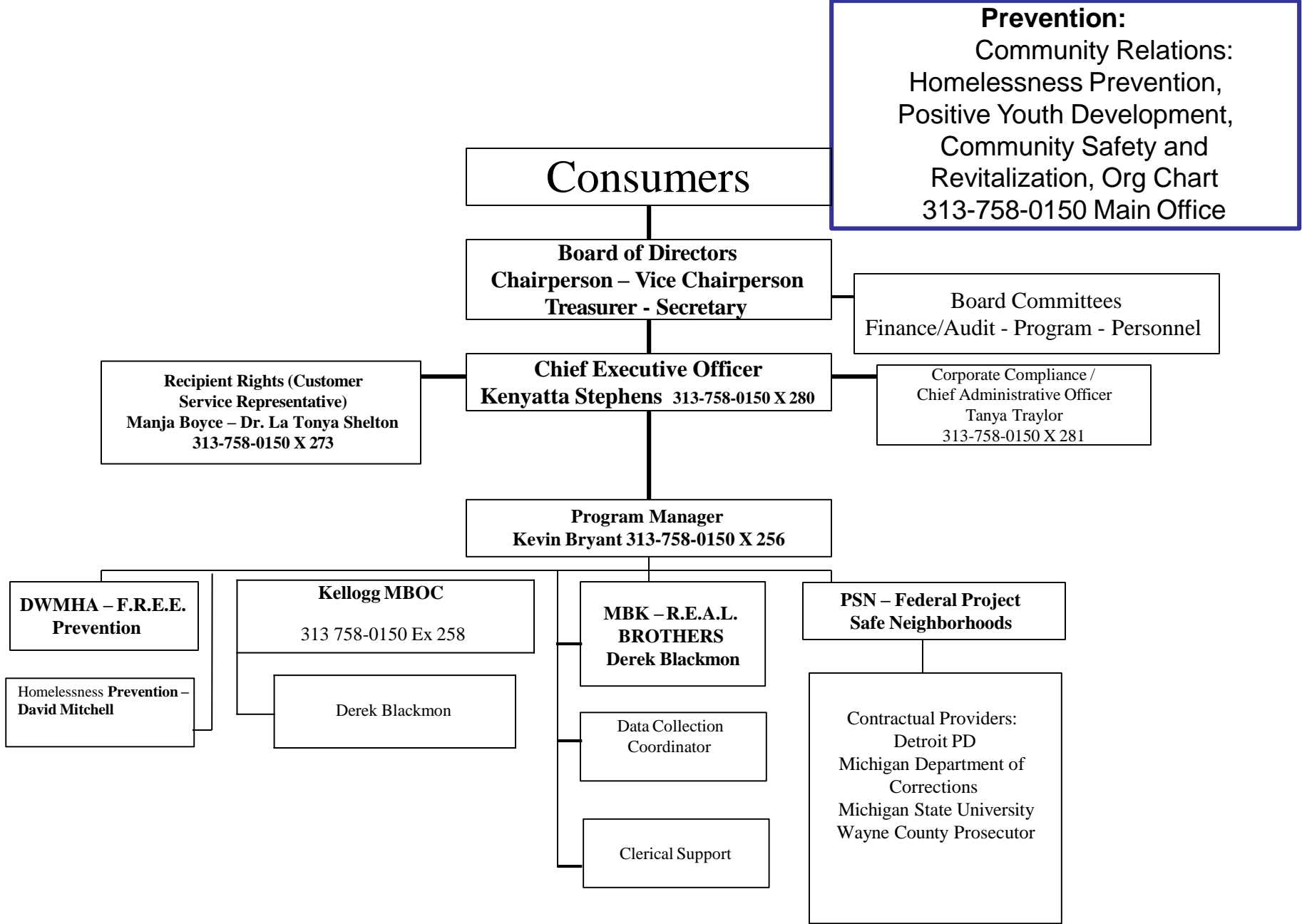
UW Counselor – Donja White
 313-758-0150

YAP Counselor
 Lisa Benjamin

YAP Counselor
 Charone Carter

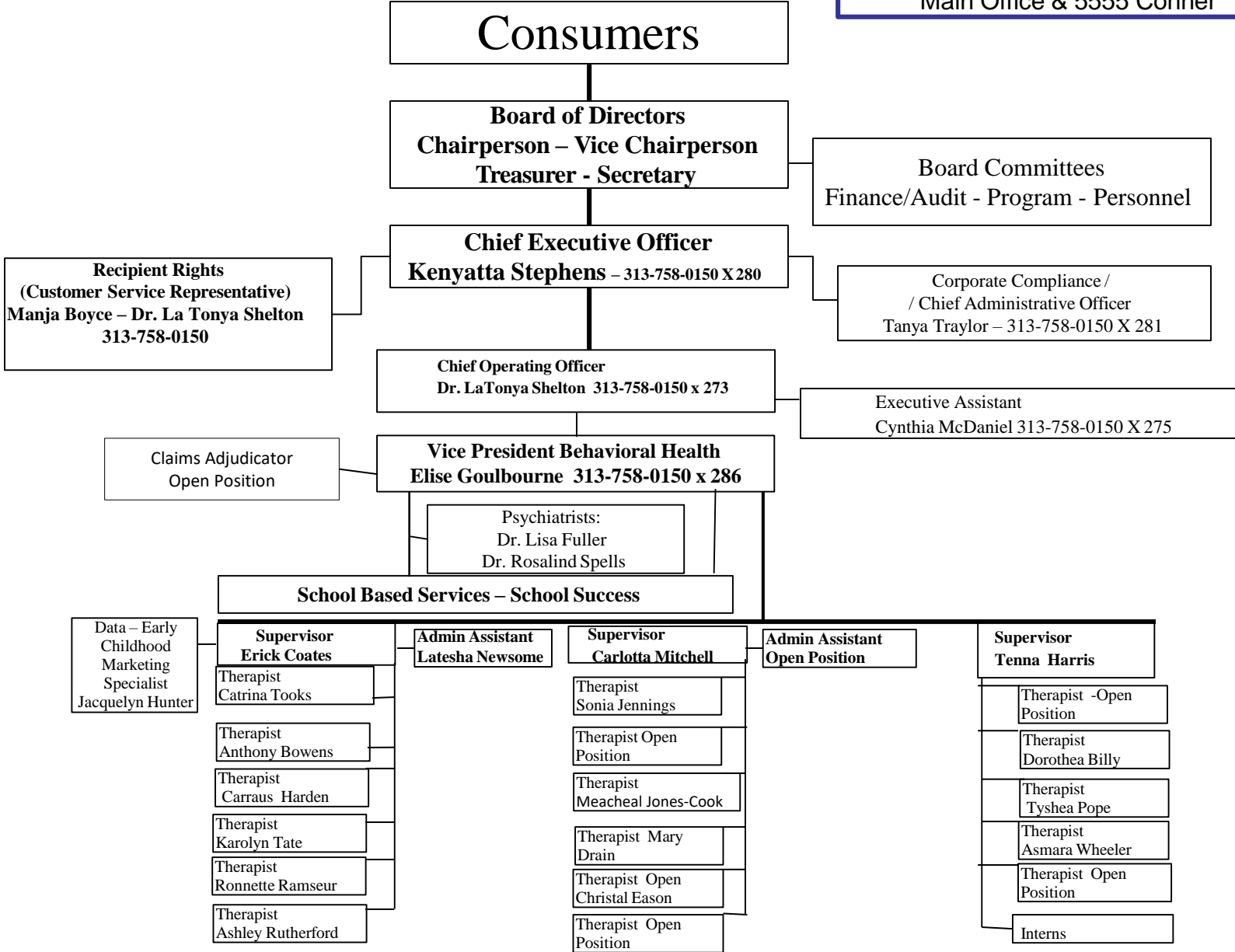
Interns

Interns



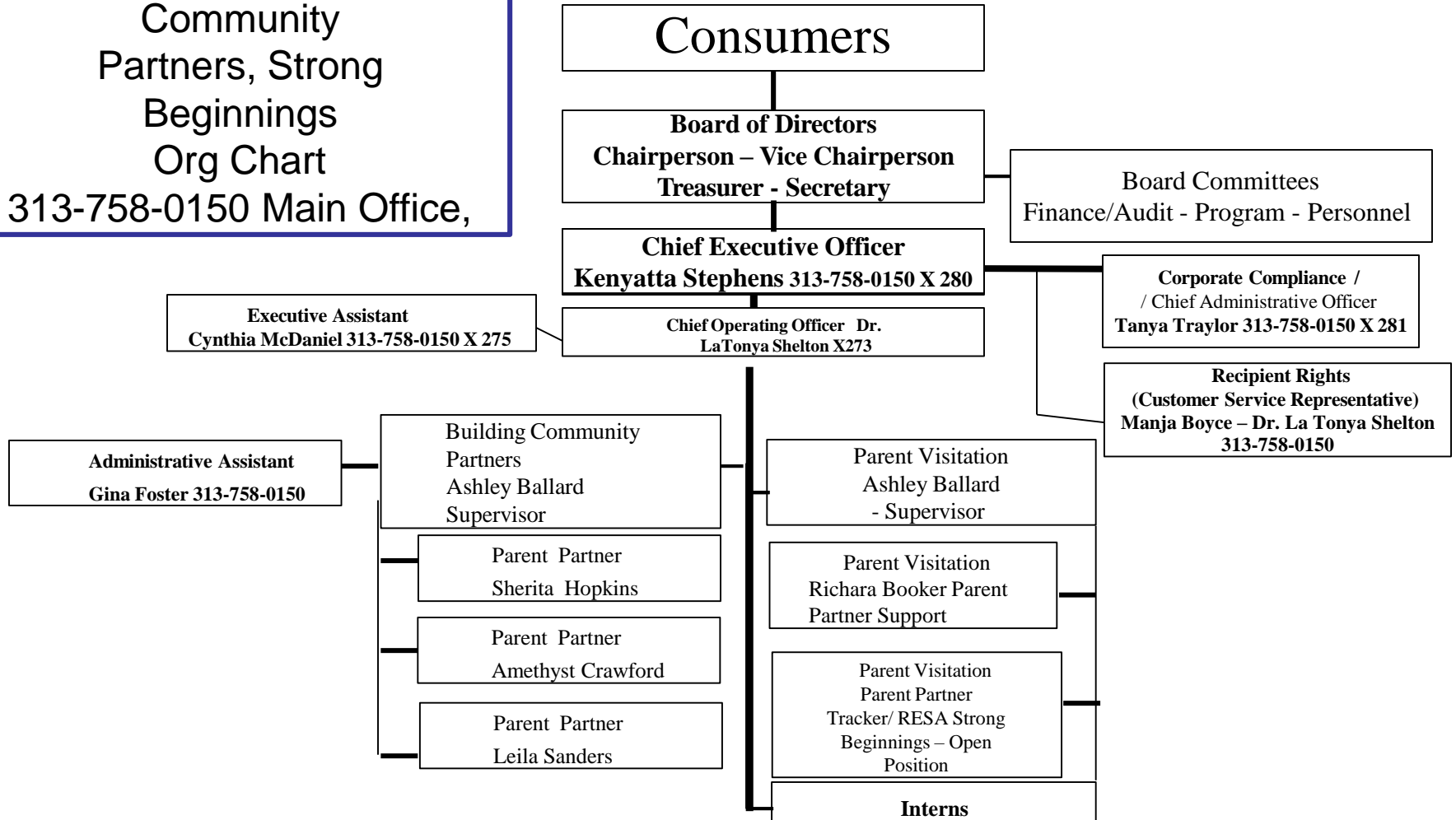
Prevention:
Community Relations:
Homelessness Prevention,
Positive Youth Development,
Community Safety and
Revitalization, Org Chart
313-758-0150 Main Office

Prevention - Behavioral Health Continued (DPSCD)
 Org Chart 313-758-0150
 Main Office & 5555 Conner



**Prevention - Parent
Visitation, Building
Community
Partners, Strong
Beginnings
Org Chart**

313-758-0150 Main Office,



Prevention - Early Learning Programs
313-758-0150 Main Office

Consumers

Board of Directors
Chairperson – Vice Chairperson
Treasurer - Secretary

Board Committees
Finance/Audit - Program - Personnel

Recipient Rights
(Customer Service Representative)
Manja Boyce - Dr. La Tonya Shelton
313-758-0150

Chief Executive Officer
Kenyatta Stephens 313-758-0150 X 280

Corporate Compliance /
Chief Administrative Officer
Tanya Traylor
313-758-0150 X 281

Chief Operating Officer
Dr. LaTonya Shelton 313-758-0150 X 273

Executive Assistant
Cynthia McDaniel 313-758-0150 X 275

Director of Early Childhood Services and Early Learning
Community
Wendy LaMarr

Bloomberg/Brilliant /
Detroit LENA Start

Everybody Ready Great Starts SOARS

Parents As Teachers
Early Learning Community Director
Janell Montaque

Family Liaison/Parent Educator Quinicia Anderson
313-308-0250

Early Learning
Community
Director
Janell Montaque
313-308-0250

PAT Family Liaison/Parent Educator Quinicia Anderson

Sonya
Thompson-Rosenberry Recruiter

Interns

Recruiter – Open
Position

Interns

SUD
 Org Chart
 313-758-0150 Main
 Office,
 and 5555 Conner

